



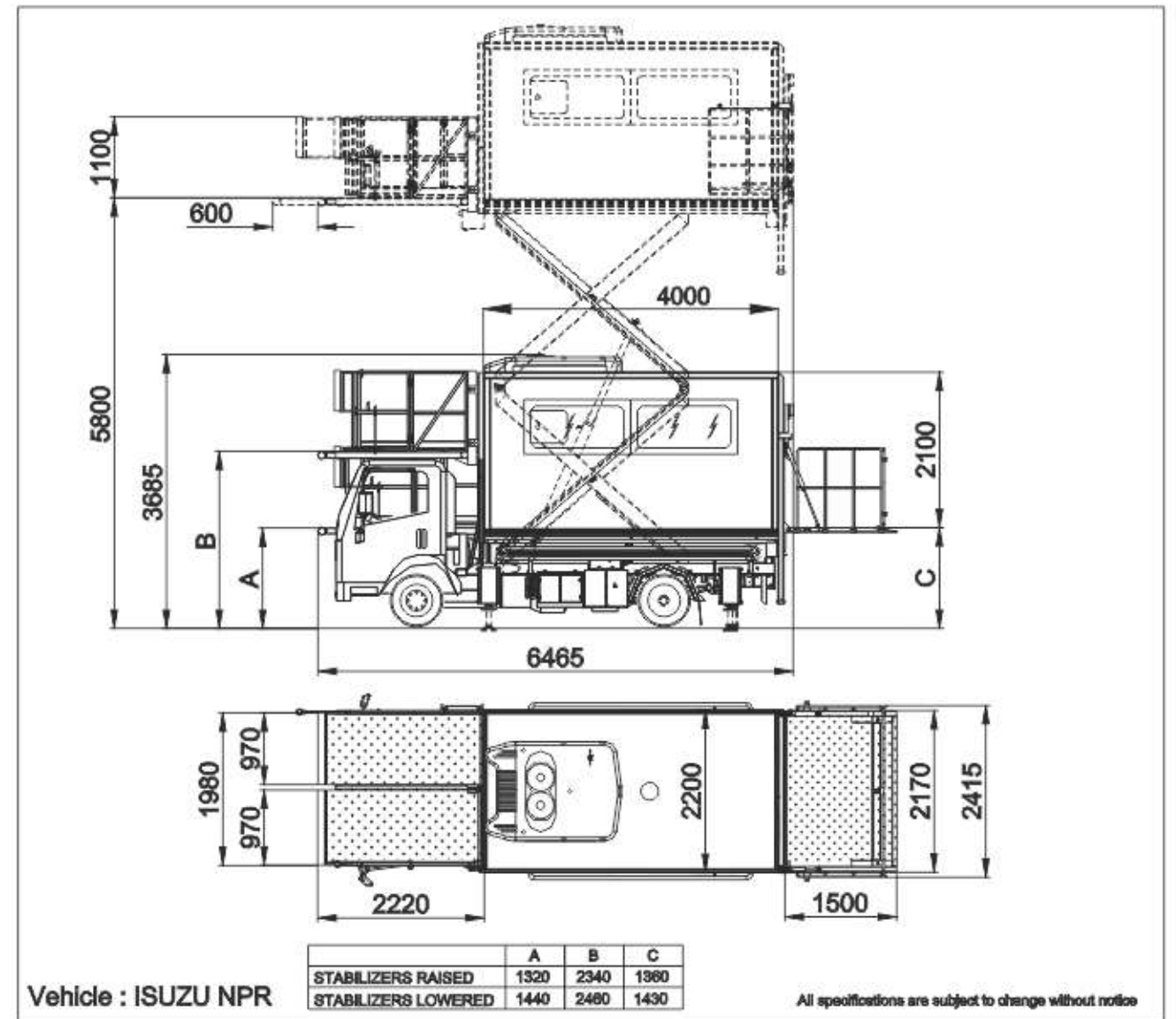
AT 5800 AMBULANCE TRUCK

VAN BODY	The steel constructed body is covered with insulation material filled polyester plates. The van-body is lifted by a scissors system powered by two single acting hydraulic cylinders. The van-body provides a lock system for wheelchairs and stretchers. Adequate ventilation is provided inside the van body and windows are provided on the both side walls. The van body provides double winged doors with sight glass at rear and a single door at front, leading to the front platform.
FRONT PLATFORM	The front platform is produced by steel profiles and moves with van body to serve the aircraft. The front platform provides an extendible part moved by a hydraulic cylinder. The floor is covered with checkered aluminum. Two independent platforms are provided in the half cab applications.
TRUCK	Subject to customer's demand.
TAIL LIFT	The van body is provided by a foldable tail lift produced by steel profiles and powered by a hydraulic cylinder via chain-pulley system to be used to carry wheelchair or stretcher and their attendant. The floor is covered with checkered aluminum and provides a ramp to aid wheelchair loading and handrails for safety.
HYDRAULIC SYSTEM	The hydraulic system is provided by an oil tank, a pump driven by truck engine, cylinders, lock valves, hydraulic valves and some useful accessories. Emergency hand pump is also used in case of engine failure. 4 hydraulic stabilizers are provided for more stability.
SURFACES	The platform and the tail lift is hot dip galvanized and the other parts are custom painted.
LIGHTING	LED type lighting fixtures, headlamps in front and rear of the platform, gabary lamps at the corners and a beacon are provided on the van body.
OPTIONS	Canopy, electrical emergency pump, heating and cooling system for van body and the driver cab, side door, emergency stair, custom painting, logo application.



Eyüpsultan Mahallesi Kartopu Sk. No: 7 34885 Sancaktepe / Istanbul / TURKEY
TEL : +90 216 527 42 70 (5 Lines) FAX : +90 216 364 33 63
e-mail: timsan@timsantr.com http://www.timsan-gse.com

TIMSAN



Vehicle : ISUZU NPR

Technical Data

AT 5800

Overall Length (mm)	6465
Overall Width (mm)	2415
Overall Height (mm)	3685
Van Body Length (mm)	4000
Van Body Width (mm)	2200
Van Body Height (mm)	2100
Front Platform Dimensions (mm)	2220 (l) x 1980 (w)
Front Platform Servicing Height (Half Cab) (A) (mm)	1320 - 5800
Front Platform Servicing Height (B) (mm)	2340 - 5800
Tail Lift Dimensions (mm)	1500 (l) x 2170 (w)
Tail Lift Servicing Height (C) (mm)	0 - 1430
Van Body Servicing Capacity	4 Wheelchairs or 2 Stretcher or 1 Stretcher and 2 Wheelchairs
Van Body Carrying Capacity (kg)	990
Front Platform Carrying Capacity (kg)	500
Tail Lift Carrying Capacity (kg)	400
Dead Weight (kg) (approx.)	8135
Shipping Dimensions (mm)	6565 (l) x 2515 (w) x 3785 (h)

TIMSAN

Eyüpsultan Mahallesi Kartopu Sk. No: 7 34885 Sancaktepe / Istanbul / TURKEY
TEL : +90 216 527 42 70 (5 Lines) FAX : +90 216 364 33 63
e-mail: timsan@timsantr.com http://www.timsan-gse.com